

# NewTom RXDC Wired ACCURATE.VISION

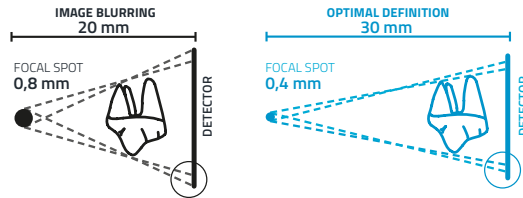
X-RAY IMAGING THAT IS PRECISE, PRACTICAL AND VERSATILE



Cone Beam 3D Imaging  
**NewTom** VET   
what's next

**HIGHER PERFORMANCE AND MAXIMUM ERGONOMICS**

Thanks to the protractor with graduated scale, arm and tube head positioning is stable, effective and just right for the task. Made of extruded aluminium and featuring an integrated self-balancing device, allowing them to be pointed in 6 directions, the arms are available in the following lengths: 40, 60 and 90 cm, making installation as simple as possible.



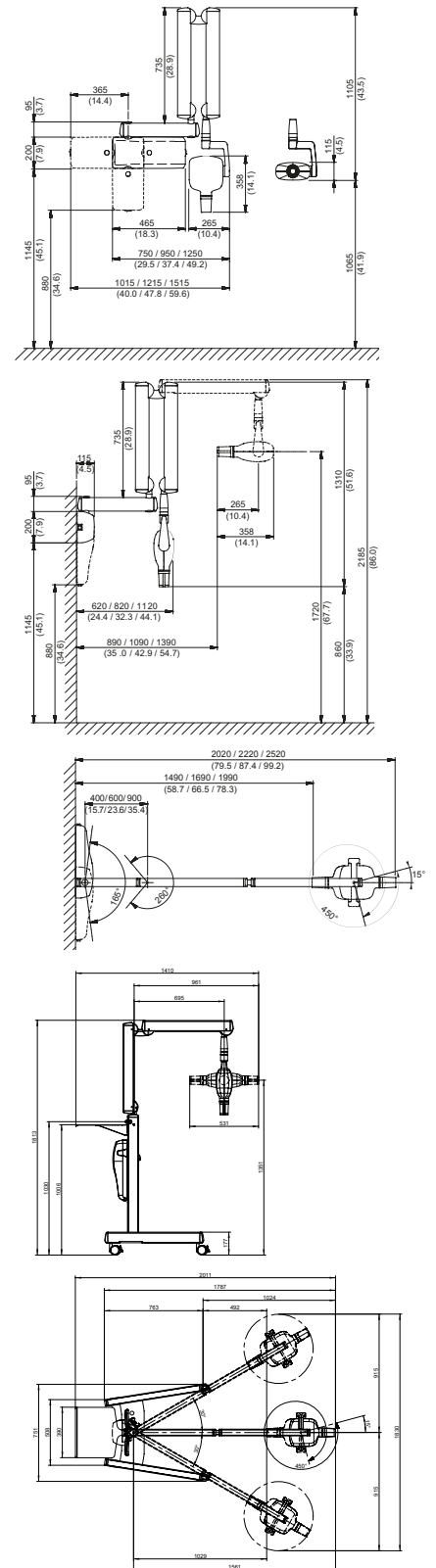
Increased X-ray parallelism and an incorporated collimator allow the RXDC to achieve a source-to-skin distance of 30 cm. The RXDC provides pin-sharp, precise images with outstanding detail.



**USER-FRIENDLY CONTROL**

A practical, user-friendly handheld unit, designed for immediate, precise X-ray image acquisition, allows easy selection of the most suitable programme. Moreover, it allows users to control the exact emitted dose and the tube temperature via the sequential exposure graph.

**SIMPLE INSTALLATION, VERSATILITY, RELIABILITY**



RXDC X-ray unit	
Generator	Constant potential, microprocessor-controlled
Working frequency	145 ÷ 230 KHz with self-adjustment (typically 175 KHz)
Focal spot	0.4 mm (IEC 336)
Total filtration	2.0 mm Al @ 70kV
Anode current	4 / 8 mA
Voltage at X-ray tube	60 / 65 / 70 kV (*)
Exposure times	0.020 – 1.000 seconds, R'10 and R'20 scale
Source-skin distance	20 and 30 cm
Irradiated field	Ø 60 mm and Ø 55 mm (with round cone)
Additional collimators (optional)	35 x 45 mm (with rectangular cone for size 2 sensors) 31 x 41 mm and 22 x 35 mm, for size 1 and size 0 sensors
Power supply	50/60 Hz, 115-120Vac ±10% or 230-240Vac ±10%
Duty Cycle	Continuous operation with self-adjustment up to 1s/90s total
Arms (for Standard version only)	Available in 3 lengths: 40 cm – 60 cm – 90 cm
Max. arm extension	230 cm, from wall
Versions	Standard (wall mounted) or Mobile (on portable cart)

(\*) values depend on the country where the product is marketed



**BU Medical Equipment**

Sede legale ed amministrativa  
 Headquarters

**CEFLA s.c.**  
 Via Selice Provinciale 23/a ■ 40026 Imola ■ Italy  
 t. +39 045 8202727 ■ 045 583500  
 info@newtom.it

**Stabilimento Plant**

Via Bicocca, 14/c  
 40026 Imola ■ Bo (Italy)  
 tel. +39 0542 653441  
 fax +39 0542 653601

newtom.it

