



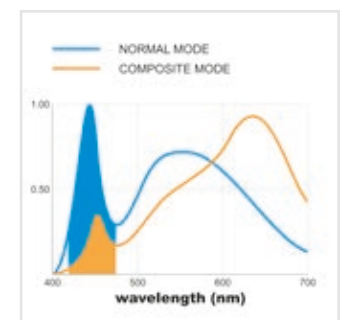
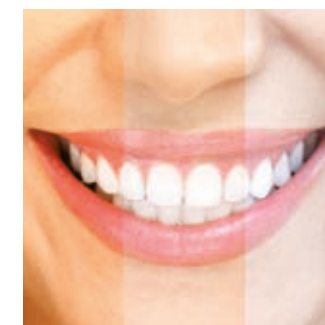
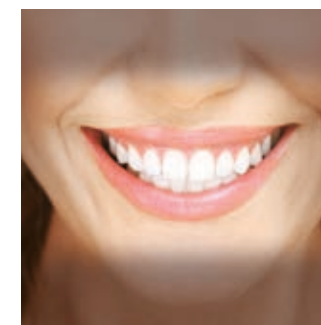
SW

VENUS PLUS LED MCT VIEW OPERATING LIGHT



### Venus Plus LED MCT View

Stern Weber redefines innovation with Venus Plus LED MCT View, the operating light with an integrated, cutting-edge 4K camera that delivers detailed, high-resolution images. The **liquid lens** ensures ultra-fast focusing, automatically adapting to different working distances. Thanks to the **digital stabiliser**, even the most complex shots remain perfectly sharp. The user-friendly touch area optimises focusing while the no-touch sensor and autoclavable handles augment hygiene and comfort.



#### Intelligent lighting to maximise performance

Venus LED MCT View provides lighting that can be personalised to suit all types of treatment: 4300K for precision surgery, 5000K for conservative restoration and 5500K for realistic colour capture.

#### Composite mode

Groundbreaking technology reduces the wavelength between 430 and 480 nm, optimising the material modelling time without interfering with polymerisation.





### Advanced technology enhances communication, training and safety

MCT View revolutionises practitioner-patient communication and streamlines the clinical teaching process thanks to the integrated 4K camera and its ultra-high resolution images. Being able to show clinical details on the monitor smooths interaction and helps practitioners explain treatment more effectively.

### Intelligent recording and storage

The digital documentation system lets users record every stage of treatment; these files are then saved, allowing in state-of-the-art management of medical records. Saved files also constitute a valuable quality control, legal protection and insurance resource.

### Smart integration, flexible installation

The Venus View software installed on the PC makes it easy to use all functions, from recordings to customised settings. The operating light system is easily connected to the dental unit monitor or to the wall-mounted monitor, and can be incorporated on the dental unit, wall-mounted or ceiling-mounted.





#### Digital stabiliser: constant precision

The digital stabilisation system ensures perfect, vibration-free imaging by eliminating the effects of any chair, patient or dental team movements.

#### Full Touch: smart, cutting-edge control

Integration with the Full Touch panel lets you control recording, zoom and image capture functions directly from the dental unit, optimising workflows and reducing the need to interact with the PC.

#### Voice-activated controls: cutting-edge technology

Voice controls offer sophisticated, fluid interaction, allowing practitioners to manage all camera functions without having to interrupt work.



#### Foot control: perfect ergonomics and practicality

The foot control joystick, which can be activated in advanced mode, lets users control the camera through simple foot movements, enhancing ergonomics, efficiency and hygiene.





