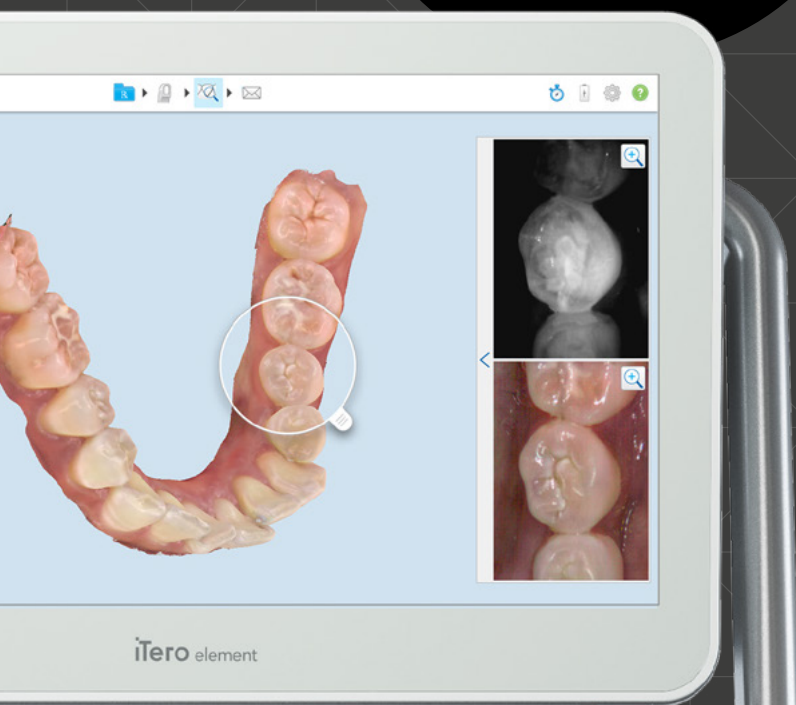


# 5D



“Hi, I’m  
**iTero Element 5D**  
and I add a  
new dimension  
to dental care.”



**iTero** element **5D**

# Give your practice a new dimension.

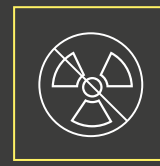
Propel your practice into new dimensions, with the iTero Element® 5D imaging system.

See beyond the current spectrum of what's possible for diagnostic aid, patient engagement and digital workflow. Introducing the first integrated dental imaging system that simultaneously:

- Aids in detecting proximal caries through near-infrared images (NIRI) without harmful radiation
- Records 3D impressions and real color photographs
- And enables tracking of changes in oral health over time and treatment outcome simulation capabilities



**Proximal caries  
detection aid**



**No harmful  
radiation**



**Intraoral  
camera**



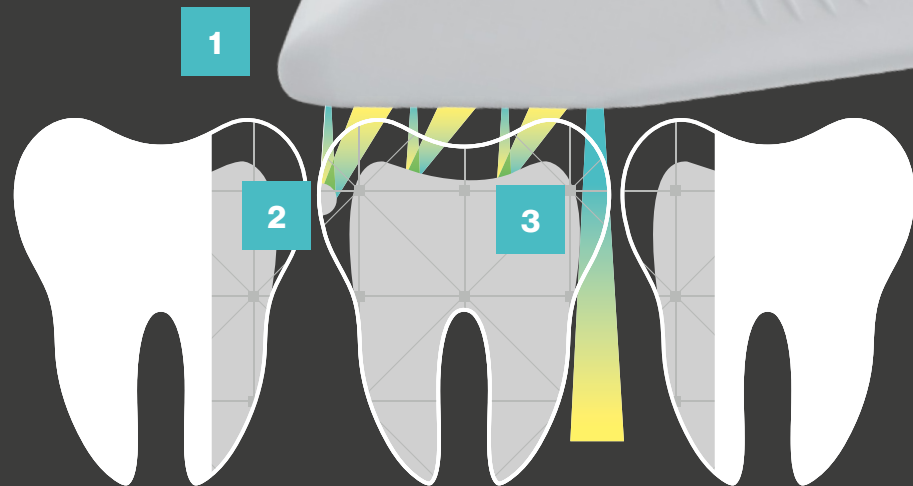
**3D digital  
impressions**



**Real-time  
TimeLapse**



**Simulation  
capability**



- 1** Wand positioned on tooth surface
- 2** Tooth dentin and other interference (e.g., caries) show up as visual contrast
- 3** Tooth enamel transparent to near-infrared wavelengths

**All within one scan without the need to change the scanner tip.**

*For illustration purpose only, not to scale.*

# See your experience in action.

Enter a new era of patient care with more powerful visual engagement capabilities.

Use the **intraoral camera** and **NIRI technology** to capture more visual capabilities beyond digital impressions.

- Capture a dynamic 3D model of your patients' teeth that you can compare alongside intraoral photos and NIRI
- Rotate the 3D model while NIRI images simultaneously match the angle of the model scan in real time, aiding in detection of caries from multiple angles
- Share these images for enhanced chairside patient communication and comprehensive patient record-taking

Illustrate all the changes happening over time with **iTero TimeLapse technology**:

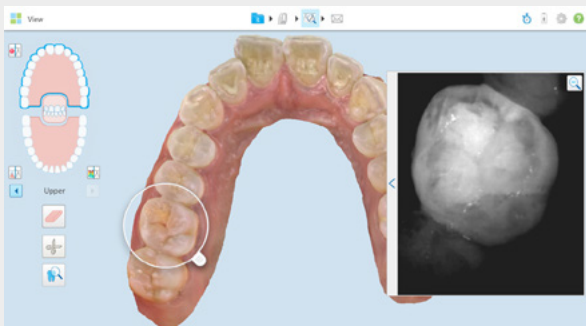
- Show patients how their oral condition may be changing over time, whether it's differences in tooth wear, tooth movement, or progression in gingival recession

**Over 70%:**

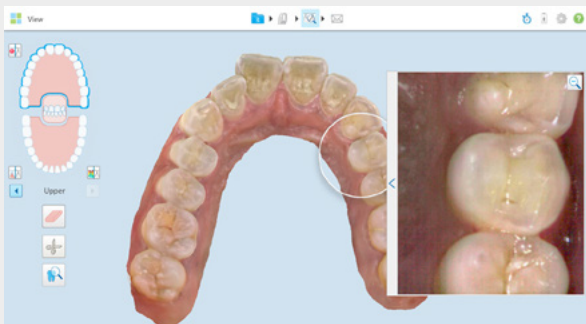
That's the rate of patient acceptance for interproximal caries treatment reported by surveyed practitioners when incorporating the iTero Element 5D scanner into their diagnostic protocol.\*

# rtise

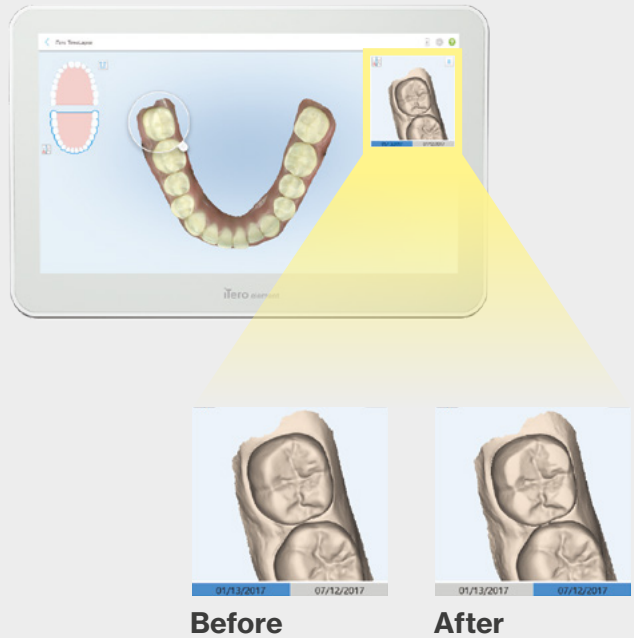
**NIRI image showing a proximal carious lesion**



**Intraoral camera image showing same angle and arch segment**



**iTero TimeLapse in color expressing signs of tooth wear**



# Let patients see what you see in **one scan.**

**Use comprehensive imagery to help patients improve their oral health beyond your office.**

Capture 3D data, intraoral images, and NIRI data in one integrated scan process to aid in your diagnostic, treatment, and Invisalign® workflows.

With state-of-the-art visualization tools that capture the spectrum of what's possible for care, patients are able to see what you see when it comes to their oral health.

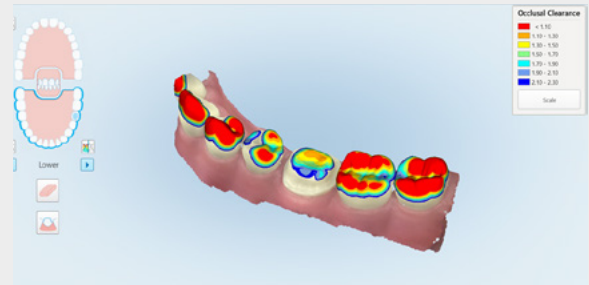
**Over 30%:**

That's the increase in business revenue that surveyed practitioners reported, derived by increased interproximal caries treatments, when incorporating the iTero Element 5D scanner into their diagnostic protocol.\*

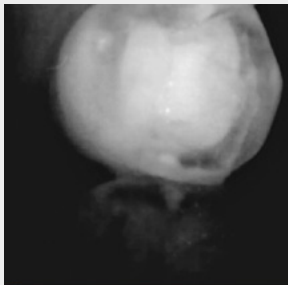
# One 3D scan. An array of powerful visualization capabilities at your fingertips.



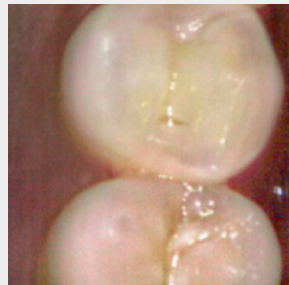
3D digital impression for restorative and orthodontic workflows



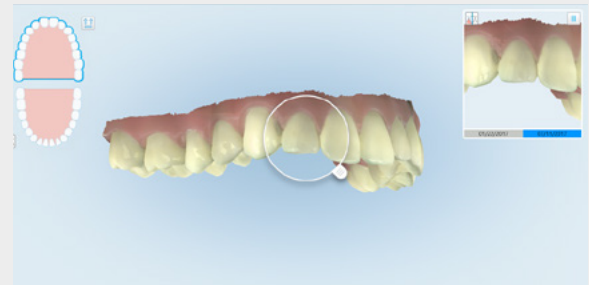
Analysis instruments such as the occlusal clearance tool



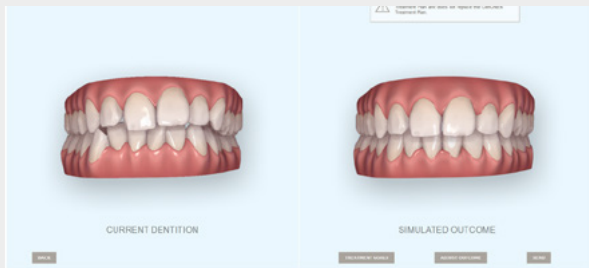
NIRI imagery



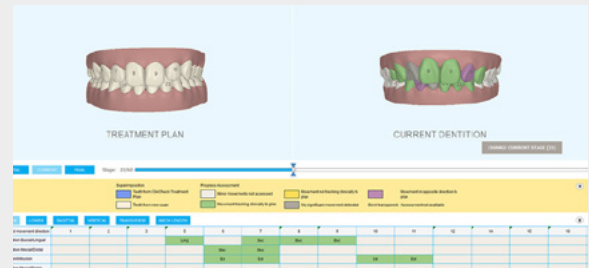
Intraoral camera imagery



iTero TimeLapse technology




Invisalign Outcome Simulator



Invisalign Progress Assessment

**Learn more about the first 3D intraoral scanner with NIRI technology at iTero.com**

**Customer Advocacy: 800-577-8767**

-  iterodigitalimpressionsystem
-  @iTeroScanner
-  @iTeroScanner
-  iteroscanner

\*Based on a survey in May of 2019 of n = 15 practitioners who participated in a global limited market release, working with iTero Element 5D for an average period of 6 months, representing both GPs and Orthos in CAN, EU and APAC, who were presented with a level of agreement scale from strongly agree to strongly disagree with the following statement: "Incorporating the iTero Element 5D scanner into my current diagnostic protocol, I experienced an increase in the number of accepted caries treatments by my patients at my practice", and then asked to estimate the average increase in revenue for the practice. Data on file at Align Technology, as of November 15, 2019.